



# BioPro Real-Time PCR for **HELICOBACTER PYLORI** Clarithromycin RESISTANCE

[www.bioproducts.at](http://www.bioproducts.at)

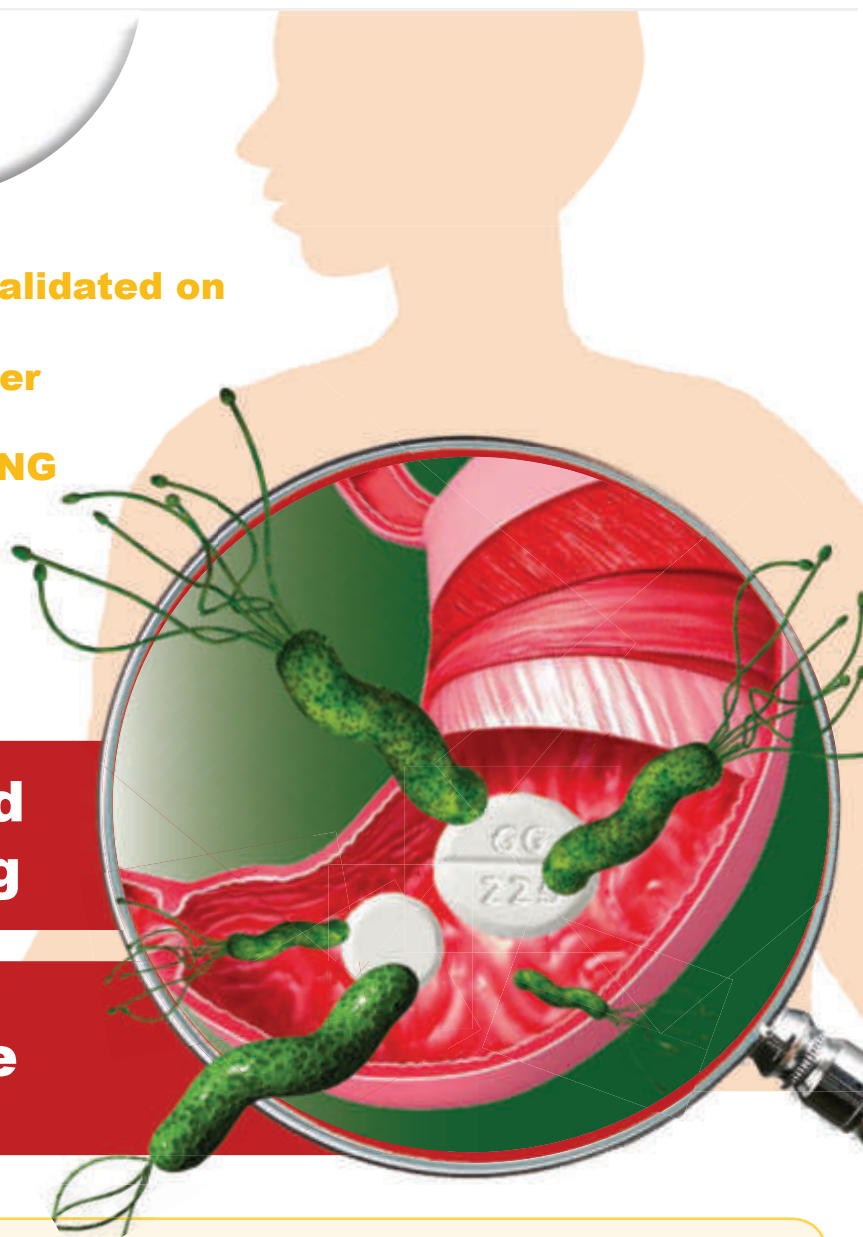


**Bio Products**

- **User friendly Kit design and validated on most common Real-Time Cycler**
- **Contamination control with UNG**
- **Sample: biopsy, FFPE, culture and stool**

**Reliable diagnostic and drug resistance testing**

**Avoid treatment failure**



About half of all humans are colonized with *Helicobacter pylori*. The gram-negative bacillus is a common cause of gastroduodenal diseases. 95% of patients with duodenal ulcer and 75% of patients with gastric ulcer have this germ. A chronic infection with *H. pylori* is also considered as a risk factor for the development of gastric carcinoma. The resistance to *clarithromycin*

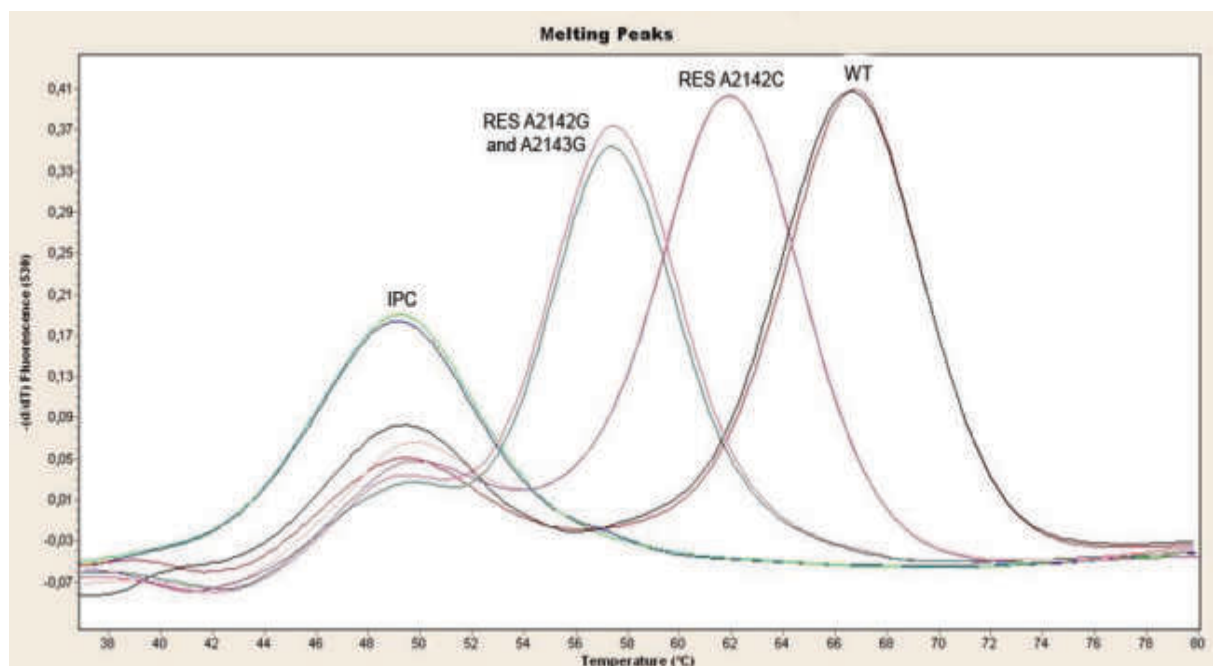
and other antibiotics is already increasing after first treatment (in *clarithromycin* to over 50%). In symptomatic children and adolescents, a resistance test should be carried out before the first therapy. With our new BioPro Assay, *H. pylori* and the resistance can be detected quickly and easily.

## Helicobacter pylori Introduction

The BioPro **PyloRes CLA** Kit from BioProducts is a Real-Time PCR based Kit for the detection of **Helicobacter pylori** and possible **clarithromycin** resistance. The Kit detects the mutations A2142G, A2142C and A2143G in a single reaction with melting curve analysis and is suited for the analysis of patients specimens from biopsy, FFPE, culture and stool.

## Technical Information

<b>Number of tests per package:</b>	50 Reaction
<b>Sample Material:</b>	DNA from biopsy, FFPE, culture and stool
<b>Target regions:</b>	23S rRNA gene
<b>Method of detection:</b>	PCR amplification with subsequent melt curve analysis
<b>Test principle:</b>	Detection of the 23S rRNA gene with specific probe for wild type and point mutations. UNG step included (contamination controll)
<b>Internal Control:</b>	Included
<b>Positive Control:</b>	DNA fragments including wild type, A2142G, A2142C
<b>Compatible Instruments:</b>	Common Real-Time PCR cyclers equipped with FAM (green) channel, e.g. LightCycler 480 (Roche), LightCycler 1.x-2.0 (Roche), Rotor-Gene (Qiagen/Corbett), CFX96 (Bio-Rad), ABI



## Order information

Product name	Description	Cycler	Size	Cat.No.
<b>BioPro PyloRes CLA</b>	Real-Time PCR Screening Kit for the detection of <i>Helicobacter pylori</i> and <i>clarithromycin</i> resistance	Common Real-Time PCR cyclers equipped with FAM (green) channel, e.g. LightCycler 480 (Roche), LightCycler 1.x-2.0 (Roche), Rotor-Gene (Qiagen/Corbett), CFX96 (Bio-Rad), ABI	50	BP401